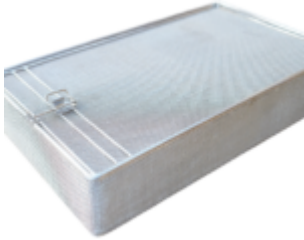


Washing Baskets

Quality by stainless

Index

1.Parts Washing Basket, Mesh, Stainless Steel, with Latching Mechanism, 380x228x75mm, ~15"x9"x3"
2.Quality Industries Parts Washing Basket, Stainless Steel, Fine Mesh, Bolt Latch, 225x150x50 mm, (8.9x5.9x2 in)
3.Quality Industries Parts Washing Basket, Stainless Steel, Two Hangers, Bolt Latch, 225x150x50 mm, (8.9x5.9x2 in)
4.Quality Industries Parts Washing Basket, Stainless Steel, Two Hangers, Bolt Latch, 225x150x38 mm, (8.9x5.9x1.5 in)
5.Parts Washing Basket, Stainless Steel Mesh, Double Locking, 343x267x51 mm, (13.5x10.5x2 in)
6.Quality Industries Parts Washing Basket, Stainless Steel Mesh, Double Locking, 279x279x64 mm, (11x11x2.5 in)
7.Mini Parts Washing Basket, Stainless Steel, Ball Clasp, 67x67x33 (mm)
8.Parts Washing Basket, Stainless Steel, Ball Clasp, 136x95x33 (mm)
9.Parts Washing Basket, Quarter Round, Stainless Steel, 223mm Radius, 132mm Height
10.Parts Washing Basket, Quarter Round, Stainless Steel, 223mm Radius, 192mm Height
11.Mini Parts Washing Basket, Stainless Steel, Ball Clasp, 100x70x33 (mm)
12.Quality Industries Parts Washing Basket, Open, for Ultrasonic Cleaner, Stainless Steel, 360x100x55 (mm)
13.Quality Industries Parts Washing Basket, Stainless Steel, for Ultrasonic Cleaner, No Lid, No Handles, 305x152x89 (mm)



Parts Washing Basket, Mesh, Stainless Steel, with Latching Mechanism, 380x228x75mm, ~15"x9"x3"

\$100

5004336



Quality Industries Parts Washing Basket, Stainless Steel, Fine Mesh, Bolt Latch, 225x150x50 mm, (8.9x5.9x2 in)

\$300

5002428

- **Fine Stainless Steel Mesh:** Perfect for holding small parts securely during washing or ultrasonic cleaning.
- **Bolt Latch Closure:** Ensures the basket stays securely shut, keeping components safe and contained.
- **Compact and Durable Design:** Measuring 225x150x50 mm, it offers efficient storage and reliable construction for heavy-duty use.

Quality by stainless



Quality Industries Parts Washing Basket, Stainless Steel, Two Hangers, Bolt Latch, 225x150x50 mm, (8.9x5.9x2 in)

\$100

5002424



Quality Industries Parts Washing Basket, Stainless Steel, Two Hangers, Bolt Latch, 225x150x38 mm, (8.9x5.9x1.5 in)

\$80

5004201



Parts Washing Basket, Stainless Steel Mesh, Double Locking, 343x267x51 mm, (13.5x10.5x2 in)

\$300

5002428sp-b

- **Stainless Steel Mesh Construction:** Durable and corrosion-resistant for industrial and laboratory use.
- **Double Locking Mechanism:** Secures contents firmly during cleaning or sterilization processes.
- **Compact Size:** 343x267x51 mm (13.5x10.5x2 in) for handling smaller components efficiently.
- **Versatile Application:** Suitable for cleaning, rinsing, and storing small parts in various settings.



Quality Industries Parts Washing Basket, Stainless Steel Mesh, Double Locking, 279x279x64 mm, (11x11x2.5 in)

\$300

5002428sp-a

- **Durable Stainless Steel Construction:** Built with a high-quality stainless steel mesh, ensuring long-lasting durability and resistance to corrosion.
- **Double Locking Mechanism:** Features a secure double-locking lid to keep parts safely contained during washing or cleaning processes.
- **Compact Design:** With dimensions of 11"x11"x2.5" (279x279x64 mm), it is ideal for holding small to medium-sized parts for efficient washing.



Mini Parts Washing Basket, Stainless Steel, Ball Clasp, 67x67x33 (mm)

\$9.99

5004112-3



Parts Washing Basket, Stainless Steel, Ball Clasp, 136x95x33 (mm)

\$14.99

?5004112-1

- **Compact Design:** Measuring 136x95x33mm, perfect for cleaning, organizing, and storing small components.
- **Durable Stainless Steel:** Made from rust-resistant stainless steel for long-lasting use in wet or high-moisture environments.
- **Secure Ball Clasp Closure:** Keeps parts securely enclosed during washing, transport, or storage.

Quality by stainless

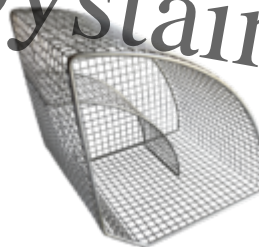


Parts Washing Basket, Quarter Round, Stainless Steel, 223mm Radius, 132mm Height

\$60

5002242

- **Durable Stainless Steel Construction** - Built for strength, corrosion resistance, and long-term reliability.
- **Quarter Round Design** - Fits snugly into corners for efficient use of workspace.
- **Optimal Dimensions** - 223mm radius and 132mm height for versatile parts washing and organization.

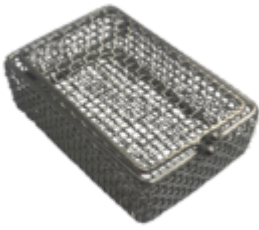


Parts Washing Basket, Quarter Round, Stainless Steel, 223mm Radius, 192mm Height

\$34

5003013

- **Quarter Round Design:** Provides efficient use of space and easy access for parts washing.
- **Stainless Steel Construction:** Corrosion-resistant and durable for long-lasting use.
- **Compact Dimensions:** Features a 223mm radius and 192mm height for versatile applications.
- **Fine Mesh Structure:** Ensures secure containment of small parts during washing.

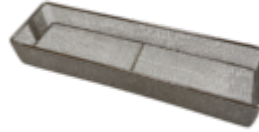


Mini Parts Washing Basket, Stainless Steel, Ball Clasp, 100x70x33 (mm)

\$12.99

5004112-2

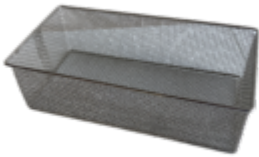
- **Compact and Lightweight:** Designed with 100x70x33 mm dimensions, perfect for small parts or components.
- **High-Quality Stainless Steel:** Rust-resistant and durable for long-term usage in wet environments.
- **Secure Ball Clasp Closure:** Ensures contents remain safely inside during washing or storage.



Quality Industries Parts Washing Basket, Open, for Ultrasonic Cleaner, Stainless Steel, 360x100x55 (mm)

\$200

5004337



Quality Industries Parts Washing Basket, Stainless Steel, for Ultrasonic Cleaner, No Lid, No Handles, 305x152x89 (mm)

\$36

5004113

Quality by stainless